



# Systems™ Boiler Pendant Adapter Product Fact Sheet

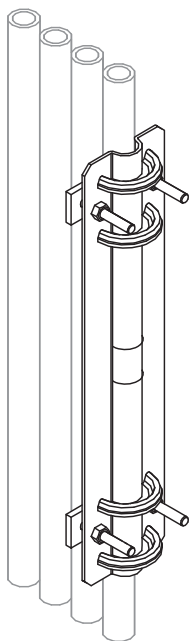


Figure 1 – Systems™ Boiler Pendant Adapter

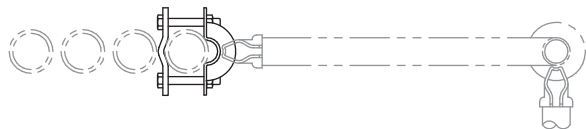


Figure 2 – Systems™ Boiler Pendant Adapter (Top)

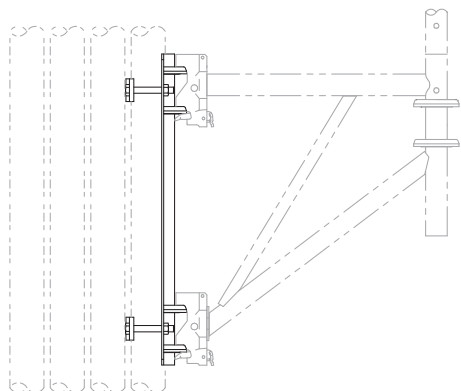


Figure 3 – Systems™ Boiler Pendant Adapter (Side)

<b>Part No. &amp; Description</b>	SBPA Systems™ Boiler Pendant Adapter
<b>Weight</b>	15 lbs.

## Features and Benefits

- Used with Safway Systems™ Side Brackets (SBK2, SBK33, SBK3)
- For use on pendant tubing, providing another access option when performing boiler inspections and maintenance
- **Longevity:** Hot-dip galvanized to withstand harsh environments
- **Easier assembly:** Attaches to pendant tubes to create support for Safway Systems™ Side Brackets; Fits pendant tubes from 1¾" to 3" diameter (tubes must have sufficient strength to support the SBPA and provide a 7/16" space for installation of backer plate)
- **Efficient:** Saves time and equipment vs. erecting scaffold from below

## Related Documentation:

Systems™ Boiler Pendant Adapter Installation Instructions (ORN 2235)

Safway Services, LLC  
Corporate Headquarters  
N19 W24200 Riverwood Drive  
Waukesha, WI 53188  
Toll free: (800) 558-4772  
Telephone: (262) 523-6500

For a list of branch locations in the United States and Canada, visit our website at [www.safway.com](http://www.safway.com)

©2010 Safway Services, LLC. All rights reserved.

**SAFWAY**®